



TO LET FRIARGATE COURT FRIARGATE PRESTON PR1 2ED

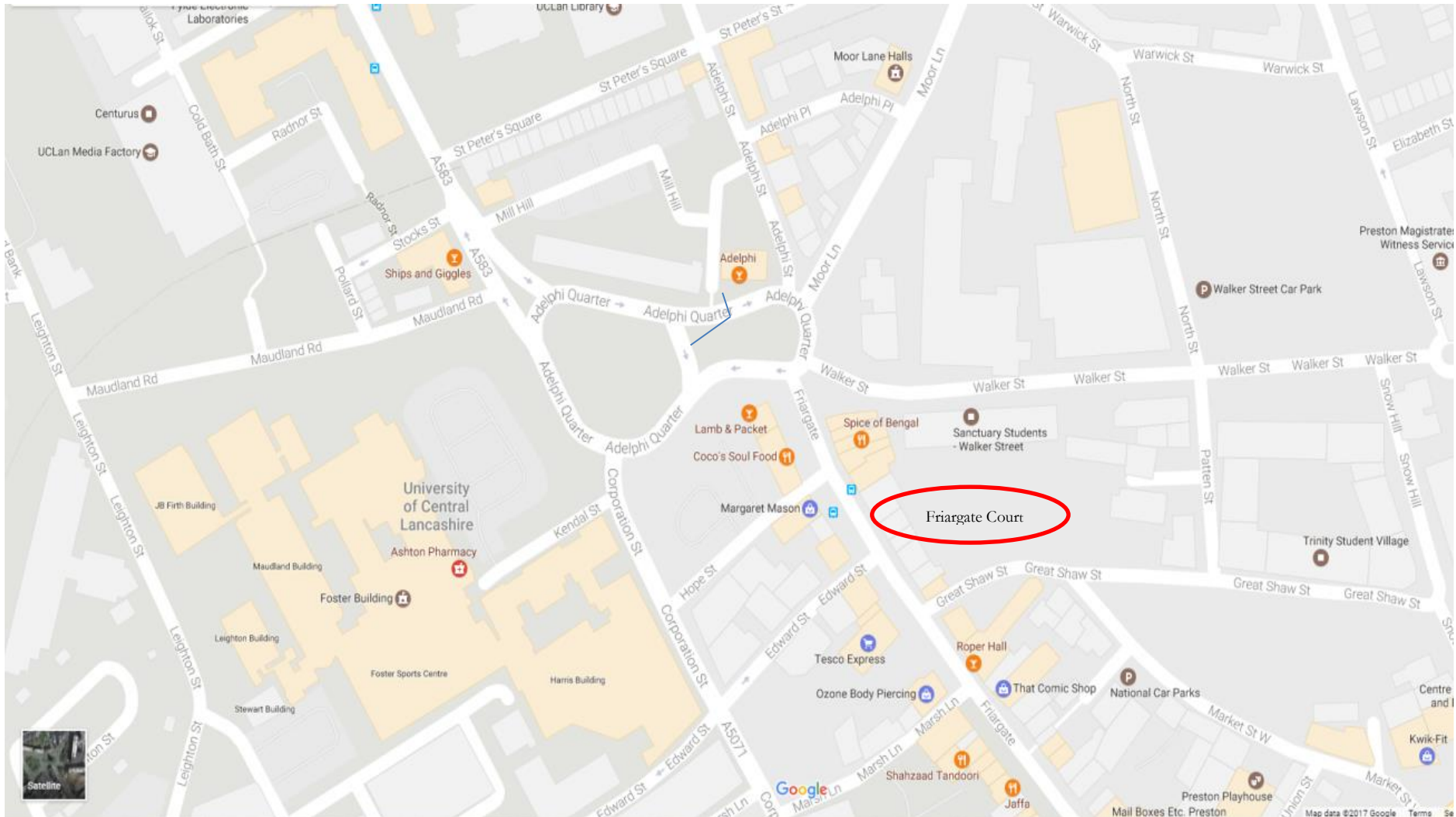
New retail development providing two units – one of 4,139 ft² and one of 1,301 ft² - in Preston City Centre.

- Situated within the heart of the UCLAN campus.
- Forming part of a major new boutique hotel-class student accommodation offering 244 bedrooms.
- Considered suitable for retail or leisure use.
- Plans attached illustrate the layout of the units..

**B2 Pittman Court, Pittman Way, Fulwood,
Preston, Lancashire, PR2 9ZG.
www.hdak-uk.com**

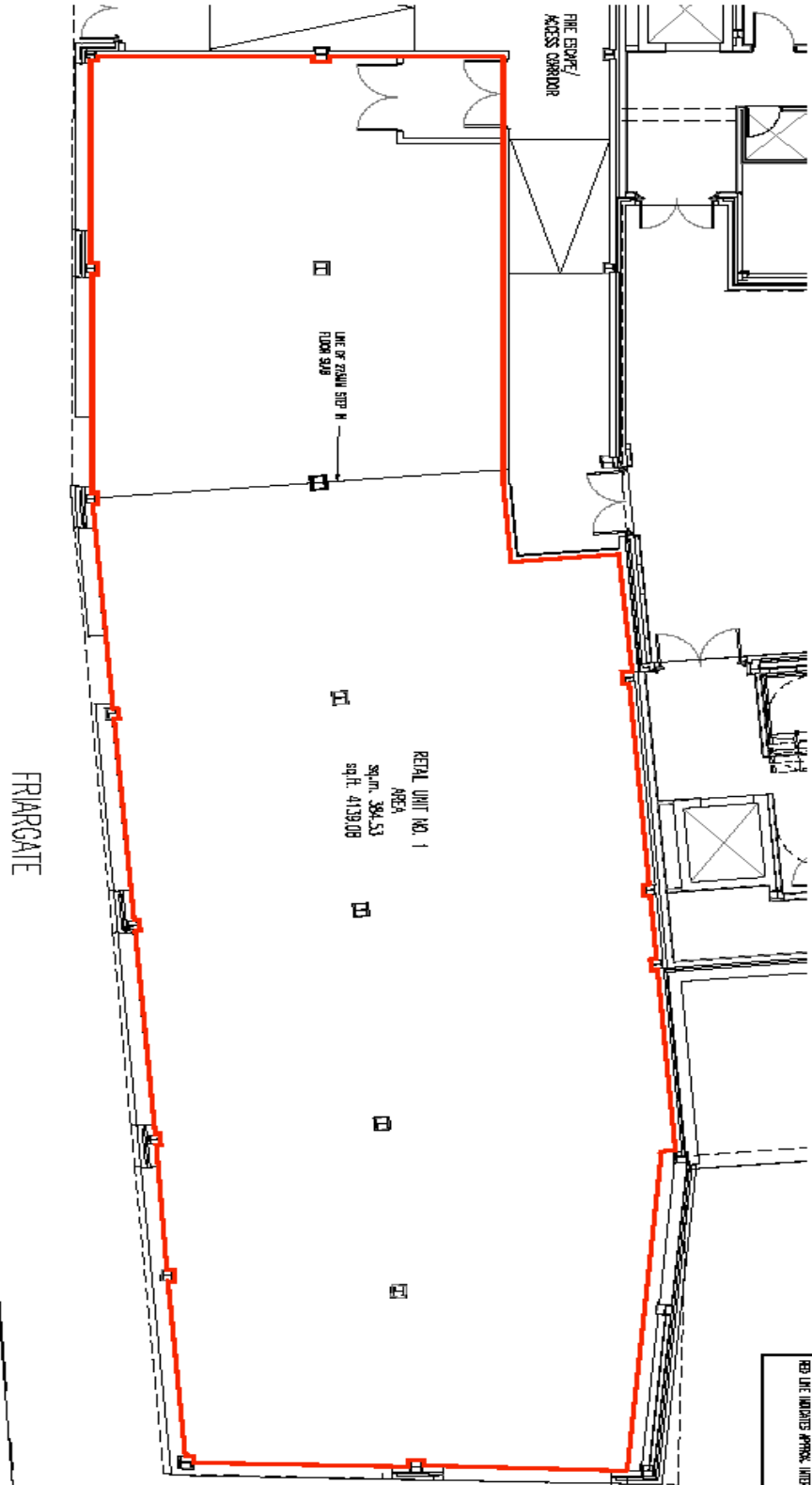
01772 652652

FRIARGATE COURT PRESTON



UNIT 1

Rental for Unit 1:
£15 per sq ft



GENERAL NOTES
THIS DRAWING IS BASED UPON THE DRAWING NUMBER 7146 (REVISED).
RED LINE INDICATES APPROX. INTERNAL FLOOR FINISH.

DATE: 15/10/11
DRAWN BY: [Name]
CHECKED BY: [Name]

LeachRhodesWalker
ARCHITECTS

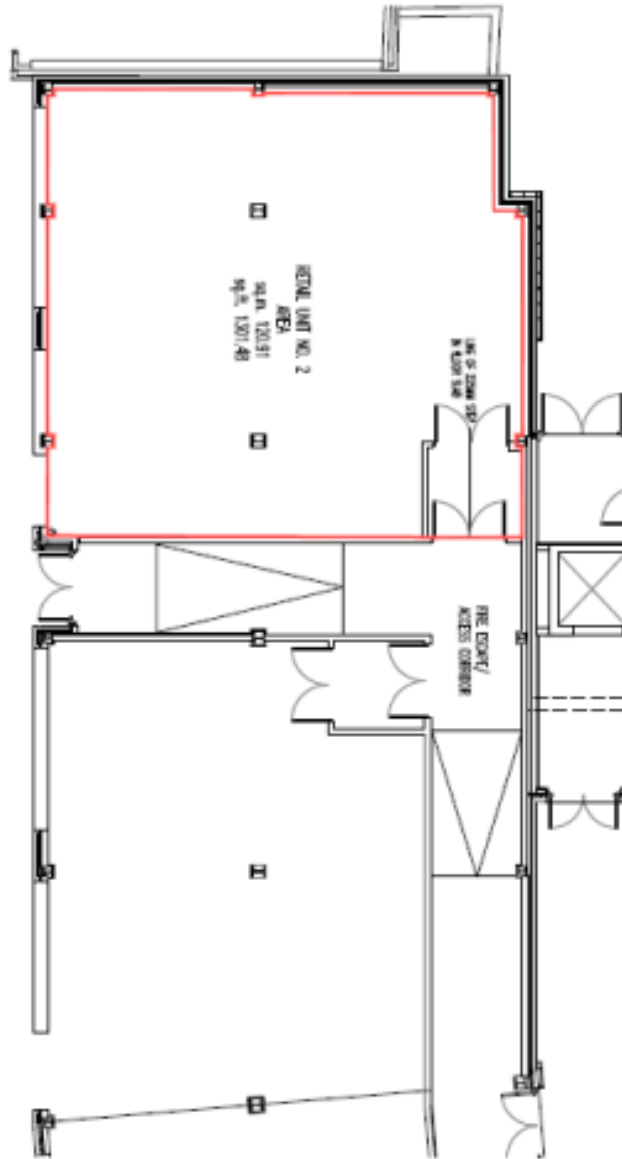
Highgate, London
020 7431 2000
www.leachrhodeswalker.com
FRIARGATE
RENTAL UNIT NO. 1 RED LINE
AREA PLAN
7146 1007111

RENTAL UNIT NO. 1 RED LINE AREA PLAN	DATE: 15/10/11	DRAWN BY: [Name]	CHECKED BY: [Name]
7146	1007111		
PROJECT: FRIARGATE CLIENT: FRIARGATE PROPERTY PRESERVATION LTD. SCALE: 1:100 DRAWING NO: 7146 DATE: 15/10/11 DRAWN BY: [Name] CHECKED BY: [Name]			

UNIT 2

Rental for Unit 2:
£20,000 per annum

FRIARGATE



LeachRhodesVivli

PROJECT	UNIT 2
CLIENT	UNIT 2
DATE	12/01/12
BY	UNIT 2
CHECKED	UNIT 2
APPROVED	UNIT 2
REVISION	UNIT 2
NO.	UNIT 2
DATE	UNIT 2
BY	UNIT 2
CHECKED	UNIT 2
APPROVED	UNIT 2